

SW 1/4 OF NW 1/4  
SECTION 23, T5N, R2W, S.L.B. & M.

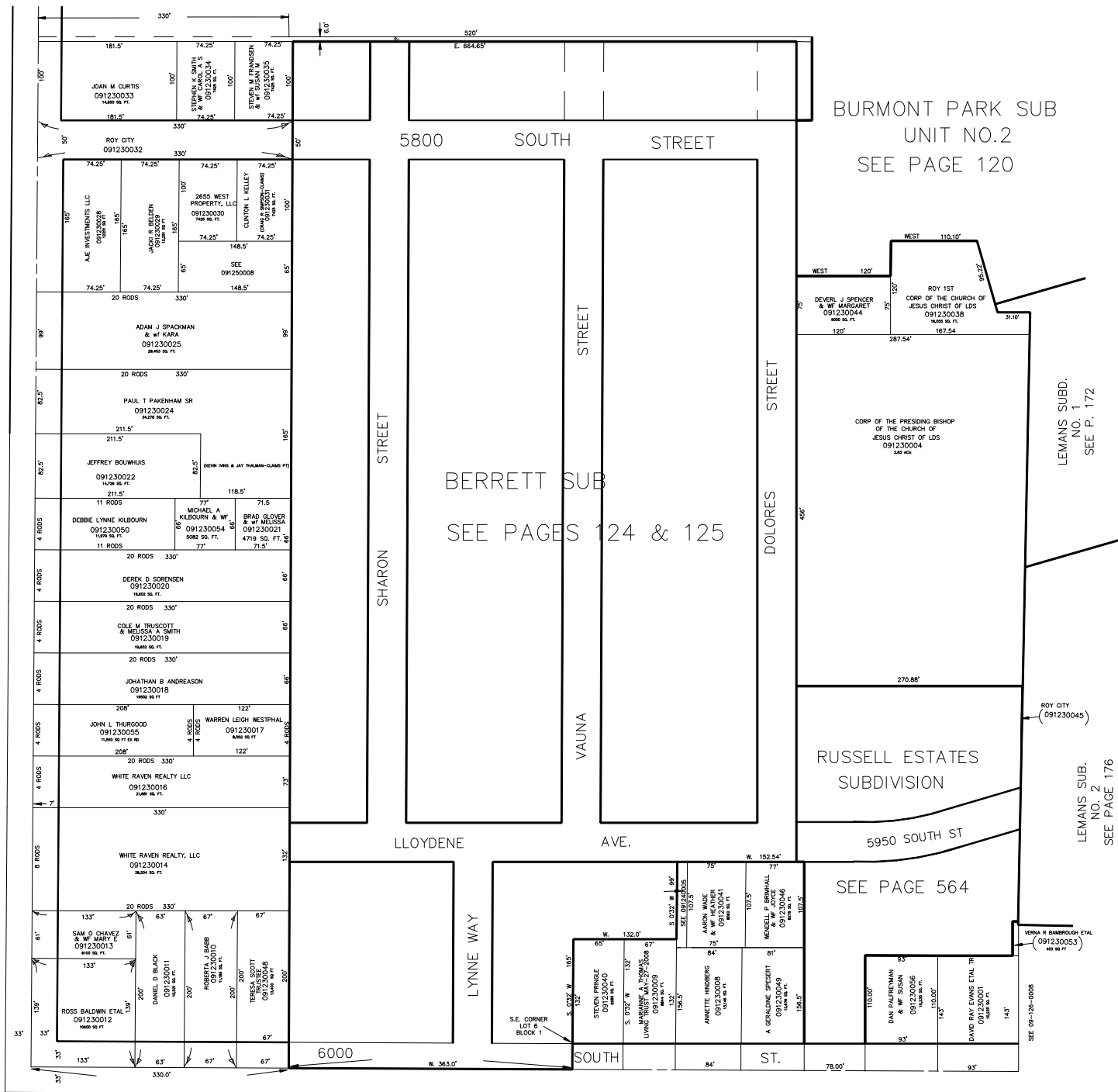
ROY CITY

TAXING UNIT: 41

SCALE 1" TO 100'

SEE PAGE 117

SEE PAGE 85



BERRETT SUB  
SEE PAGES 124 & 125

BURMONT PARK SUB  
UNIT NO.2  
SEE PAGE 120

LEMANS SUBD.  
NO. 1  
SEE P. 172

RUSSELL ESTATES  
SUBDIVISION  
SEE PAGE 176

SEE PAGE 564

VERNA R BAMBROUGH ETAL  
(091230053)